



a+d

ARCHITECTURE+DESIGN

A JOURNAL OF INDIAN ARCHITECTURE | VOL XXII | NO 3 | MARCH 2005 | Rs 125

a+d & Spectrum Foundation
Architecture Awards 2004

**a+d & Spectrum Foundation
Architecture Awards 2004**

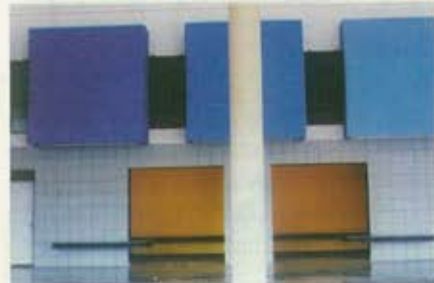


Special Mention

Rahul Deshpande and Associates, Goa
Canacona Bus Stand, Goa

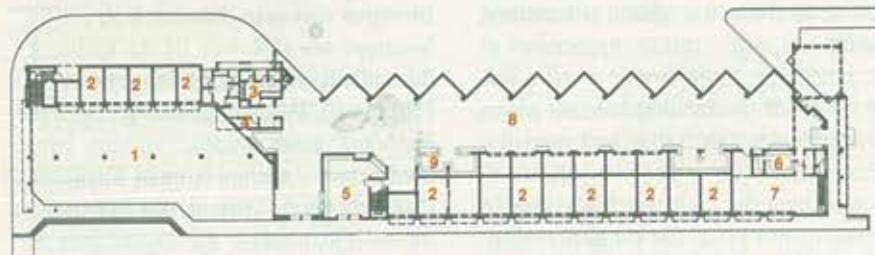


RAHUL DESHPANDE



The bus stand takes its inspiration from the nearby beach of Palolem, renowned for its rows of compacted, willowy palms and its spectacular waves. The grey and white exterior of the bus stand leaves one unprepared for the sheer vitality and colours of its interiors. The roof is designed as a wave supported by columns and trusses representing palm trees. Vibrant colours mark out different functional spaces, such as the purple balustrade of the cafeteria, the uniform grey and blue

frontage of the shops, yellow of the waiting area and orange of the washing facilities. User need is the fundamental principle on which the design is based. The aesthetics were in no way allowed to dominate the functionality of the building to ensure that the facilities are accessible and user-friendly. The bus entry and exit are separate and independent from the commuter entry. The infrastructure is designed to accommodate the expanding needs of the community for the next 25 years.



GROUND FLOOR PLAN

- | | |
|-------------------|----------------------|
| 1. Entrance lobby | 6. Kitchen |
| 2. Shop | 7. Canteen |
| 3. Toilets | 8. Passenger walkway |
| 4. Store | 9. Sitting area |
| 5. KTC office | |

Client Goa State Infrastructure Development Corporation Ltd
Design team Rahul Deshpande, Milind Khade, Prabodhini Ekawade
Consultants Rahul Deshpande, Anil Palekar, Siddesh Tuenker (Structural), Casterlino Consultants (Electrical)
Contractors D S Contractors Pvt Ltd
Built-up area 2500sq m
Cost of project 280 lakh
Year of completion 2004