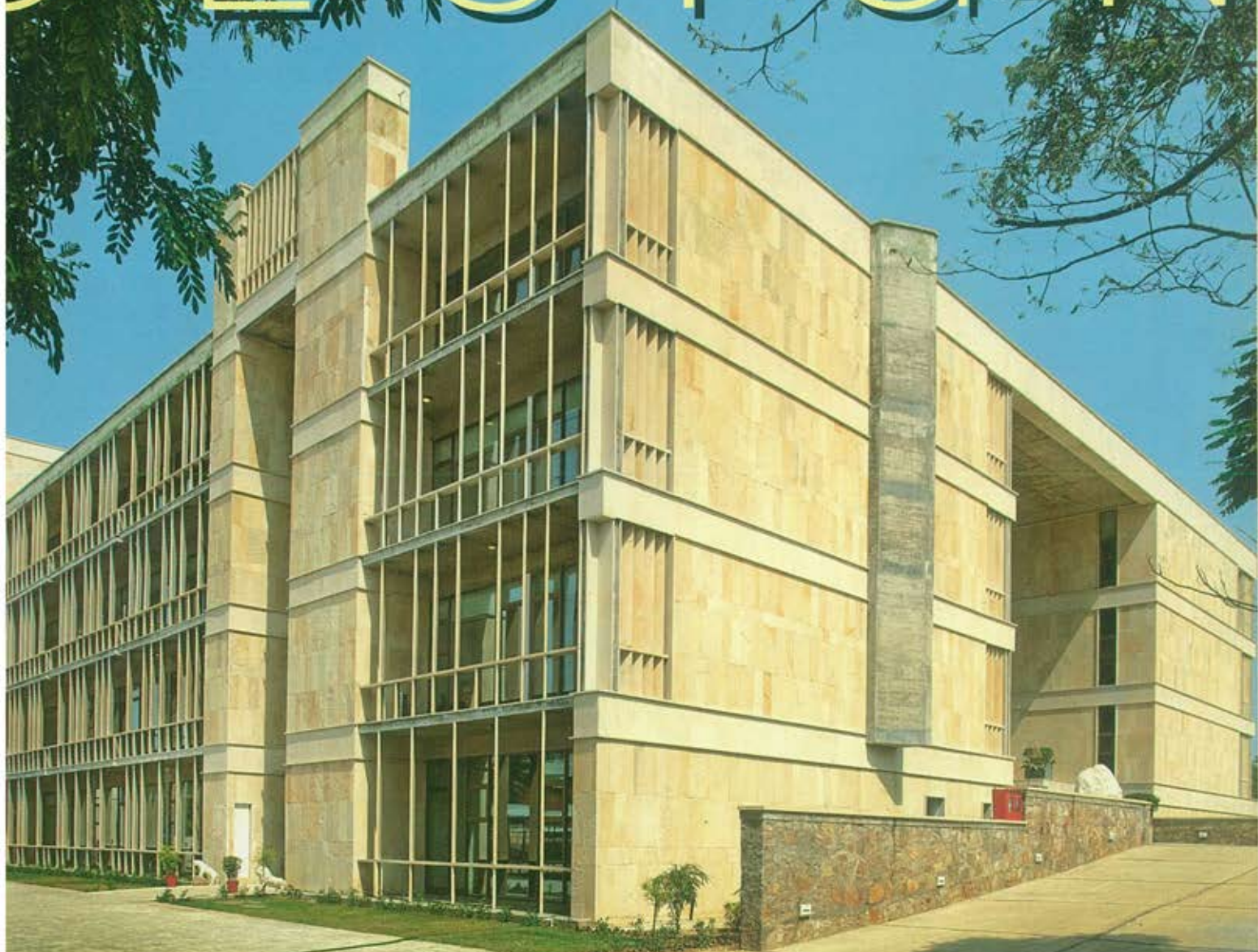


ARCHITECTURE + DESIGN



AESTHETIC CONTEMPLATION • HERITAGE & RESTORATION

JURY OUTCOME

ARCHITECTURE +
DESIGN & SPECTRUM FOUNDATION
ARCHITECTURE AWARDS



A walk through the quiet by-lanes of Chorao unfolds a bevy of ancestral houses of Indo-Portuguese architecture. The unassumingly mansion is one among these many houses that holds the attention in sway. It is the client's ardent love for books and studious bent of mind that fermented in their decision to invest in an old house just opposite to their own home.

Decades ago, this old rundown house acted as a private library for the village. In continuing this vein of a tradition, the client has converted a greater part of the entire house into a reading and study area. A veritable touch was possible only by reconstructing it from scratch, which was done retaining the existing architectural style of the house.

The couple has found their answer to a perfect means of ideating in their little cosy retreat. This place sees often times high profile guests coming to stay. The house has top notch facilities for this niche segment. The houses in the island of Chorao have an imperial feel to it owing to the reason that during the colonial rule, the higher echelons of the Portuguese classes made their homes here. And perhaps that is why the mansion has a statute of a sentinel on the garden parapet.

Library: A voluminous library greets one while entering inside the house. The room area has a couch where one can slump yourself on and read. In the latter half, there is a heavy table with chairs. Furnished, it looks sleek. To its side is a mini resto-bar. The books have been kept in specially

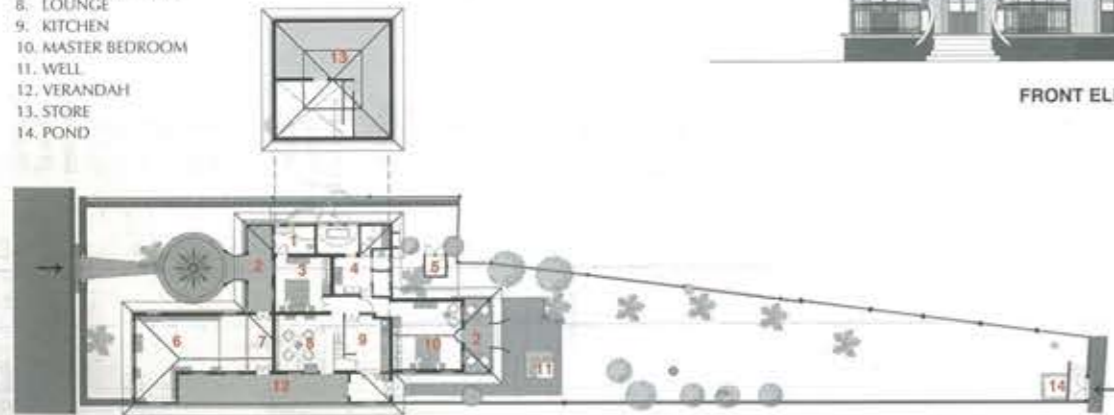
blending the modern with colonial

Project: The Olde Library, Residence-cum-library, Goa
Architects: Rahul Deshpande & Associates, Goa





- 1. GUEST TOILET
- 2. BALCAO
- 3. GUEST BEDROOM
- 4. MASTER TOILET
- 5. PUMP HOUSE
- 6. LIBRARY
- 7. ENTRANCE LOBBY
- 8. LOUNGE
- 9. KITCHEN
- 10. MASTER BEDROOM
- 11. WELL
- 12. VERANDAH
- 13. STORE
- 14. POND



GROUND FLOOR PLAN



FRONT ELEVATION



Views of the Olde Library, Residence-cum-Library, Goa





designed cabinets. The design ensures an efficient system of horizontal indexing making it easier to look through and find the book you want.

Two wooden pillars support a small quarter leading to the next storey. This transition is done seamlessly as the intervention melts with the background. It is only when one near it, does the appearance of the fascia and handrails of the stairway become evident. The roof has wooden beams interspersed with an aluminium ceiling which renders a uniformed pattern.

Kitchen: This area has been spruced up with the addition of a modular kitchen complete with auburn coloured cabinets and drawers which makes it orderly and neat. The floral wallpaper in between the overhead compartments and the gas stove beneath makes a fitting statement. A thin partition in the form of a door leads to a dinette, which provides a view of the garden.

Veranda: The veranda overlooks the playground. The doors are oblong and have glass panes which allows light to seep in the interiors, a feature common in the house plan. The hatch of the doors presents you a choice converting the door to serve the purpose of window.



Study Room: The atmosphere in the study room is a mix of a corporate and a homely feel. This ambience makes work enjoyable. Working here makes you relaxed. The room has a reclining chair with a cane back. The computer is placed strategically near the window for obvious reasons and minimises on the need for artificial lighting. This rids the needs for installing electrical fixtures that usually come with a baggage of intruding pipes, and wires. The lamp shade and



the antique furniture is a juxtaposition of the rooms' healthy and tasteful combo of the modern with the colonial styles. The books have been lined up in a crossword style. The cabinets below have mirrors. The design of the study room is so systematic and leaves no space for clutter.

Master bedroom: The master bedroom is a piece of oeuvre in itself. It is roomy in the centre as the master bed is located on one side. The king sized canopy bed is an antique which adds on to the overall opulent feeling. The numerous draped windows provide the room with ample light and ventilation.

Bathroom: The room has a sophisticated ensuite too. This bathroom is equipped with amenities to suit the urban high end market clientele. It has a sunken bath with multiple faucets. The window panes have been customised to allow only the person inside the bathroom to look through. The Munjee's home is one that simplifies the complexities of modern amenities effortlessly. ✚

FactFile

Client: Naseer Munjee | **Design team:** Rahul Deshpande, Anil Palekar, Archana Mahambare, Ezra D'Souza | **Consultant:** Rahul Deshpande, R D Bhide (Electrical) | **Contractors:** M/s Omkar Constructions (Civil), M/s Omkar Electricals (Electrical) | **Built-up area:** 250sq m | **Cost of project:** Rs 90 lakh | **Year of completion:** 2009