

JANUARY 2017 ₹ 200

ARCHITECTURE+DESIGN

THE INDIAN JOURNAL OF ARCHITECTURE

DIVERSITY IN INDIAN ARCHITECTURE • URBAN DESIGN • RESIDENCE INTERIORS

SN. 0097-0239
70097 023635



Multi-utility public space



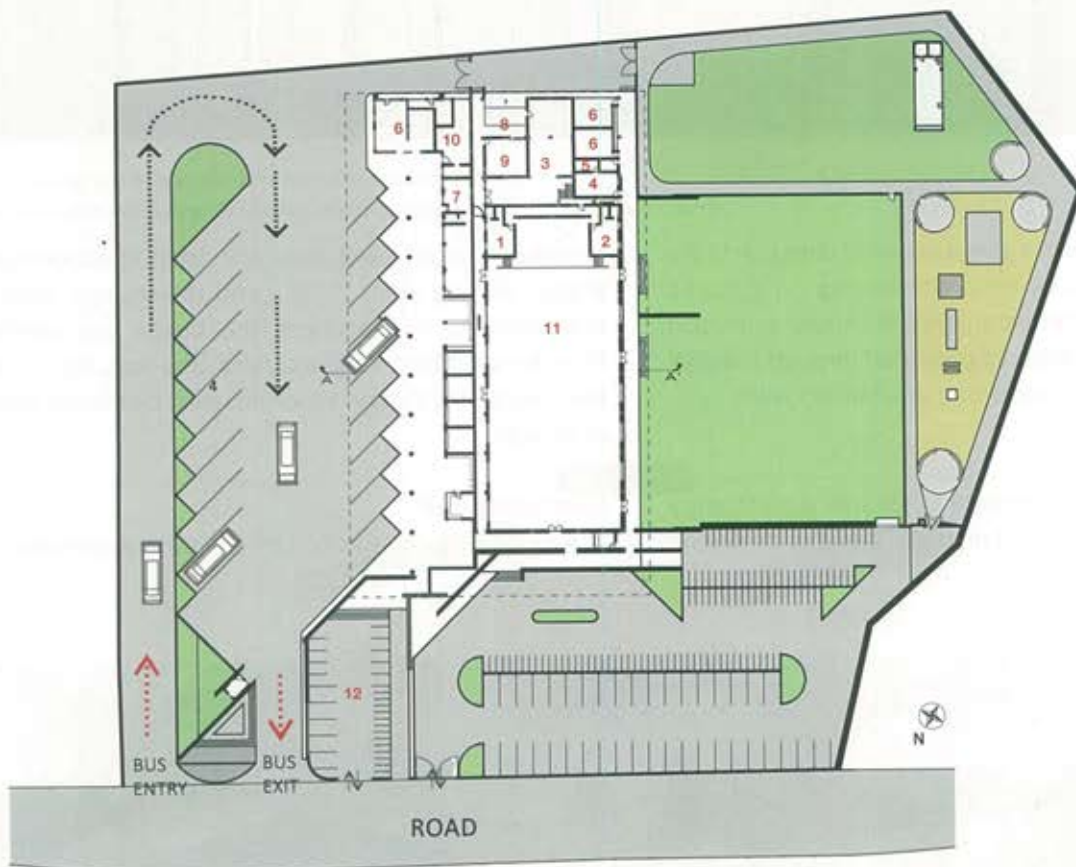
Rahul
Deshpande

Project: Valpoi Bus Stand and Community Hall, Goa
Architects: Rahul Deshpande and Associates, Goa

The Government of Goa had proposed the construction of a multi-utility public building in Valpoi, a small town in the Western Ghats. It had to include a bus stand, a community hall and a children's park with a jogging track. The building complex had to be free of maintenance and have a low budget, with all units independent in their operations, function and administration. Valpoi, being nestled in the magnificent

Western Ghats, is often frequented by hovering clouds that carry with them an armour of lightning and thunder. The design aspires to capture this wonder of nature.

Valpoi faces an annual rainfall of 200 inches from June to October. The design evolved in response to the brief and the climate. The plan, therefore, is compact, less porous yet open in its attitude, well-ventilated and adequately lit. The triangular exposed laterite walls masquerading as



1. GENTS REST ROOM
2. LADIES REST ROOM
3. GENERAL STORE ROOM
4. OFFICE
5. STORE ROOM
6. TOILET
7. KITCHEN
8. SERVICE AREA
9. ELECTRICAL ROOM
10. DRIVERS REST ROOM
11. AUDITORIUM
12. PARATRANSIT PARKING

SITE PLAN



mountains in the landscape give a sense of direction to the visitor, being sheltered by an overpowering yet graceful metal-clad roof. A deliberate attempt to create an illusion of suspension and lightness is pulled off through a series of eloquent cantilevering roofs and unattached walls.

Bus Stand

The bus stand is an independent entity with a wide entry and exit, 10 parking bays and nine idle parking. Its plan is

commuter-friendly, spacious and open. It accommodates shops, waiting areas, toilets and drivers rest areas. The overwhelming roof shelters, the buses and commuters from the scorching heat and rains. The security house and the toilet block, though separate units, blend into the fabric of design.

Community Hall

The journey is more important than the destination – this





ELEVATION

- 1. SHOPS
- 2. AUDITORIUM



SECTION



AREA

ZARME	झरमे
THANE	ठाणे
HIVRE	हिवरे
HEDODE	हेपोडे
GOLAVLI	गोळावली
CHARVANE	चरावणे

DHAME	धामे
USTE	उस्ते
HANODA	हानोडा
SORAL	सोराल
KADTARI	कटारी
SINGNE	सिंगने

KHARDE	खारदे
VELDUM	वेलदुम
CARANDE	करान्दे
SURKODIA	सुरकोडिया
PADLI	पादली
PINDLAKH	पिन्डलख

...	...
...	...
...	...
...	...



is precisely the notion of the design. Through a labyrinth of laterite wall passages you reach the community hall welcoming you with its vastness and silence. The decor is minimal, the lighting cleverly restrained and space wonderfully sublime.

Tucked away in the west end of the site, the children's park is a contrast in its attitude. The colours clash against themselves, fabricating an intentional chaos and the play equipment complements this chaos. A well-leveled and paved walkway meanders around the play area and the orchard, which when walked on surprisingly covers half a kilometer, qualifying it to be joggers' park as well. +

Factfile

Client: Goa State Infrastructure Development Corporation Limited (A Government of Goa undertaking)

Design team: Principal Architect – Rahul Deshpande, Engineer – Anil Palaker

Consultants: Electrical consultant – Castellino Engineering Consultants Pvt Ltd; Acoustic consultant – V N Purandare & Associates; HVAC – R S Kulkarni

Cost of project: Rs 8 Cr

Built-up area: 2,862sq m

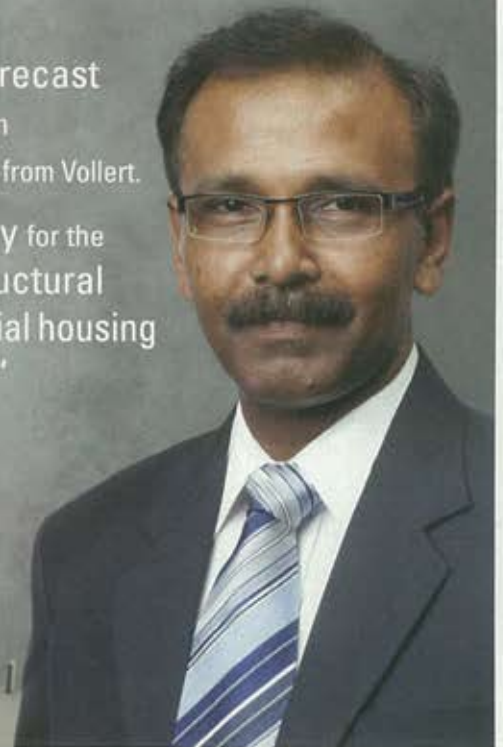
Year of completion: 2013

Company names of products and materials used: Roof sheet – TATA Bluescope make; Sanitary ware fittings – Jaquar; False ceiling – Anutone Acoustics Limited

“Since 1925 the global precast concrete industry trust on know-how and expertise from Vollert.

Simply the best technology for the production of plane and structural precast elements for residential housing and industrial buildings.”

Debashish Roy
Vollert India Pvt Ltd
Phone +91 844 7731109
debashish.roy@vollert.in



made in Germany
Precast Success

90 YEARS
1925-2015

Vollert

www.vollert.de

www.youtube.com/VollertPrecast