

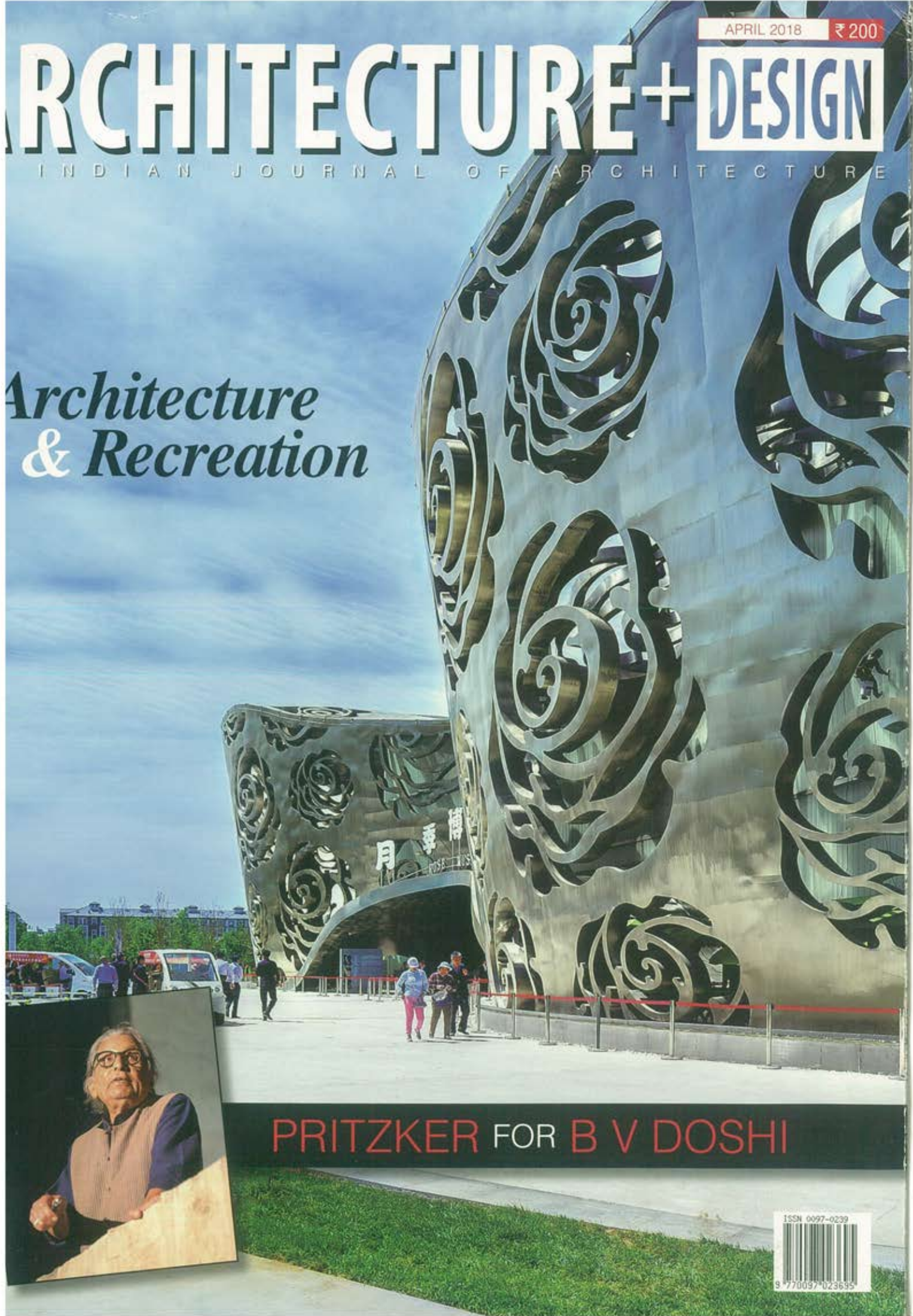
APRIL 2018

₹ 200

# ARCHITECTURE+DESIGN

INDIAN JOURNAL OF ARCHITECTURE

*Architecture  
& Recreation*



PRITZKER FOR B V DOSHI

ISSN 0097-0239



9 770097 023695



# Nestled in the Meadow

**Project:** - 'DEVRAJ', Old Goa  
**Architects:** Rahul Deshpande & Associates, Old Goa

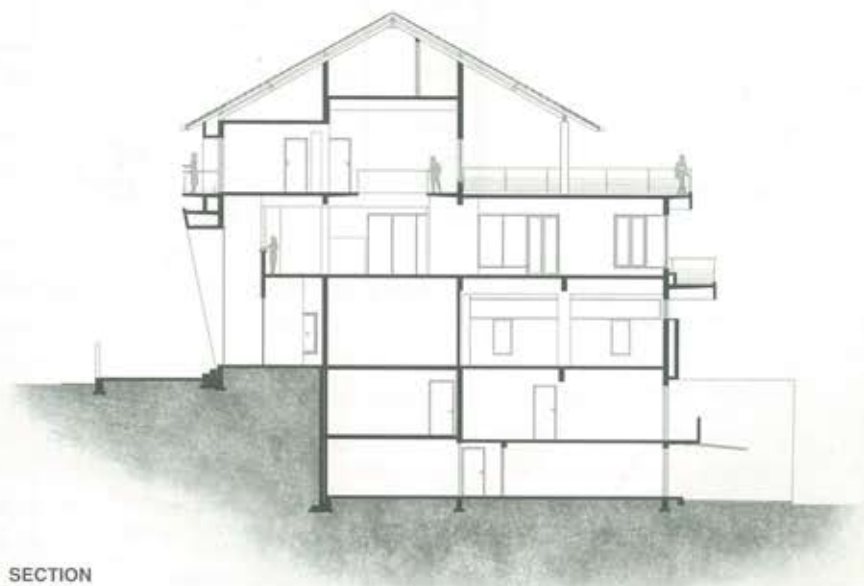


Rahul Deshpande

The project brief was to design a dwelling for a family of three which could house an office with apartments for the staff and would respect the site, and cherish memories that have been collected over a lifetime.

The memories of Italian homes, the prevalent Latin architecture in Goa characterised by overwhelming straight walls with their steep roof slopes and fine sense of balance were subconsciously engraved. Whereas the





SECTION





LOWER GROUND FLOOR PLAN

1. OFFICE STORE
2. HOUSE STORE
3. GARDEN STORE
4. HELPER'S ROOM
5. DRIVER'S ROOM
6. ELECTRICAL ROOM



GROUND FLOOR PLAN

1. LOBBY
2. RECEPTION
3. MEETING AREA
4. CONFERENCE ROOM
5. MD'S CABIN
6. STUDIO
7. MATERIAL LIBRARY
8. PANTRY
9. STAFF DINING



UPPER GROUND FLOOR PLAN

- 1. STAFF QUARTERS
- 2. GARDEN ENTRY
- 3. PARKING
- 4. GARDEN
- 5. FISH + AMPHITHEATRE



FIRST FLOOR PLAN

- 1. ENTRANCE FOYER
- 2. LIVING AND DINING
- 3. KITCHEN
- 4. SERVICE AREA
- 5. GUEST BEDROOM
- 6. BAR COUNTER
- 7. TERRACE



SECOND FLOOR PLAN

- 1. PUJA AREA
- 2. LAUNDRY ROOM
- 3. GUEST BEDROOM
- 4. DAUGHTER'S ROOM
- 5. MASTER BEDROOM
- 6. DRESSING AND WALK-IN CLOSET
- 7. ENTERTAINMENT ROOM/STUDY
- 8. TERRACE

reminiscences of *jharokha*, a prominent feature in Mughal architecture, the commemoration of traditional niches in the walls of Maharashtra's *wadas*, the wicket gate of the Dilli Darwaza of the Pune's Shaniwarwada were very close to heart. The synthesis of these recollections and pursuit to express them in a contemporary language without compromising on the functionality were the challenges on which the design evolved and in turn developed its own contemporary personality.

The residence is nestled in the meadows of Old Goa neighbouring the majestic churches and stands at the very location where capital city of Goa once dwelled. The basic operational design pivots on being site conducive and climate responsive. The sloping characteristics of the plot allowed spaces to snuggle themselves around the functionality and as a consequence terraces emerged to oversee the nature around. The south-west oriented spaces are extroverted with thick walls, narrow openings, large





overhanging roofs and cavity walls to keep the sun and rain off its limits and in contrast the north-east ones are intently introverted to invite the tender sun rays and the cool breeze.

The spaces are free flowing interconnected by corridors, passages and walkways always ending with a window as if to take you to the nature, or bring it in at every turn. The house has total five floors and an attic. The lower ground floor is nudged into lowermost part of the slope, provided only for store rooms, servant quarters and service areas. The upper ground floor has the staff apartments. The ground floor above is the office which is accessible from the main road, for convenience of the visitor.

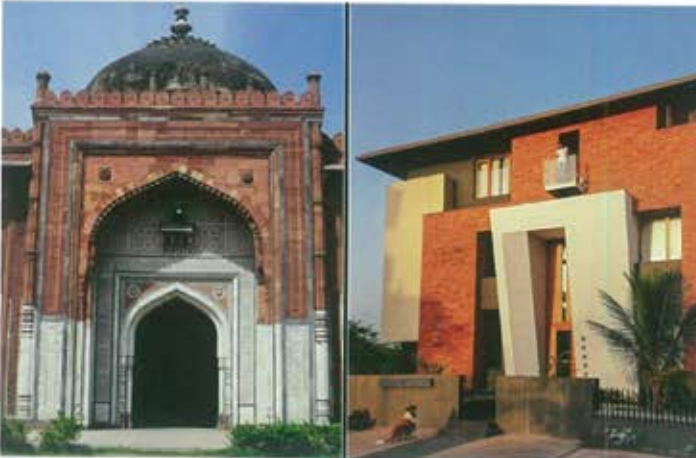
The first floor where the residence is perched is lead through a dark cold staircase only to open out into a bright











**Concept Inspiration:** View indicating the *jharokha* of Purana Qila

View indicating the grand door of Shaniwar wada

vivacious lobby draped with glass all around. The living and dining rooms with a kitchen attached form the core of the first floor, all opening out on the terraces to relish the visual splendour of greenery and the glimpses of historical churches. A guest room sits quietly on the other end with a bar at its side.

The second floor with its central open void connects visually the residence vertically, and at the same time all rooms open onto it. The master suite, the study-cum-entertainment room, daughters' room and the *puja* being on the highest level, are the fortunate ones to experience the million dollar view of the Sahyadri Mountains, meadows and the Mandovi river. The presence of the spacious terrace only betters the experience.

The clever juxta positioning of the site characteristics, climate, context and functionality, subtly revealing memories in a seamless flow of spaces, is nothing short of a journey through tranquillity, visual bliss and nostalgia. ✚

### Factfile

- Client:** Rahul Deshpande
- Design team:** Rahul Deshpande, Varun Kulkarni
- Consultants:** UCS electrical Consultant
- Built-up area:** 395sq m
- Cost of project:** Rs 180 lakh
- Year of completion:** 2016